

Square Fit

General Product Information

Age group	13+ Years
Play capacity (users)	8-16

Colour Information

Pastel Blue	●	RAL 5024
Green beige	●	RAL 1000
Salmon Pink	●	RAL 3022
Pebble Grey	●	RAL 7032
Pearl Orange	●	RAL 2013
Khaki Grey	●	RAL 7008
Anodic Gold	●	-



For its compact size, the Square Fit packs a mighty punch.

This cleverly designed outdoor fitness essential supports all boot camp exercises and comes with a battle rope, punch bag, rope climb, Salomon's ladder, pull-up bar and barbel holders. Perfect for personal and group training sessions.

Our rigs are designed to optimize your space, offering efficient solutions that are flexible, versatile, and support group training. You have the flexibility to personalize your training area with our No Rocket Science equipment and storage components.

The Square Fit is available in three different sizes: **Small, Medium, and Large**. Each size offers all the essentials for outdoor strength training.



Square Fit



The pull-up bars are 180 cm long with a diameter of 32 mm. The bars are hot-dip galvanized, and the surface is powder-coated, providing a smooth surface that allows users to perform dynamic exercises without risking injury.



The posts of the Bootcamp Base are made of 80x80x3 mm steel, hot-dip galvanized, and coated with two layers of powder coating. Thanks to these oversized posts, the structure is nearly unbreakable and exceptionally rigid.



The Target Shoot is made from 15 mm HDPE plate. HDPE is a highly durable, ecofriendly material, which is recyclable after use.



The Square Fit has fixed barbell positions and flexible barbell positions with J-hooks. With J-hooks, you can adjust the bar to the correct height for each of your lifts. These heavy-duty J-hooks fit securely in place, allowing you to focus on your workout without worrying about hook slippage or movement. They are hot-dip galvanized and can withstand all weather conditions.



Each Square Fit offers the option to add a boxing bag. All the necessary hardware is provided to easily attach your boxing bag and start your workout. The bolts and connectors are made from stainless steel, ensuring durability and longevity.


Certified
EN16630
product

All NRS fitness products are compliant with the EN16630 Outdoor Fitness Standards. Load tests are performed as a static test by adding dynamic factors as well as safety factors to the specified load of 78 kg per user. A product intended for 1 user is loaded with 420 kg.

Square Fit Small

Item no. SQF20300-0901

Product Details

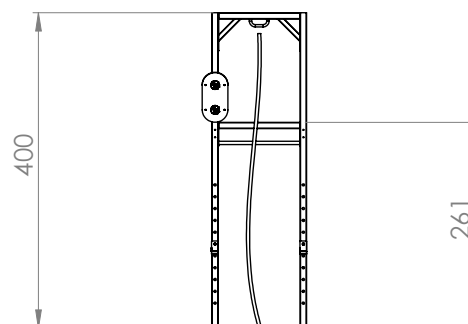
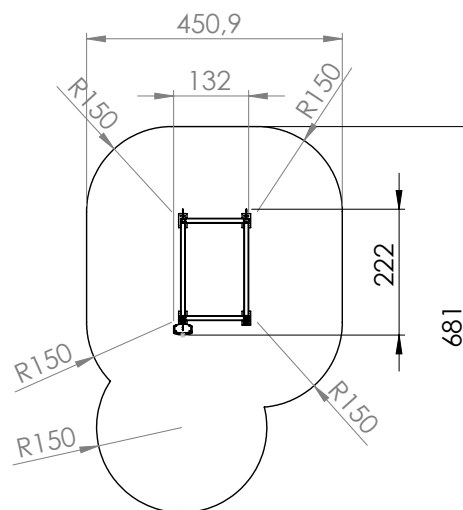
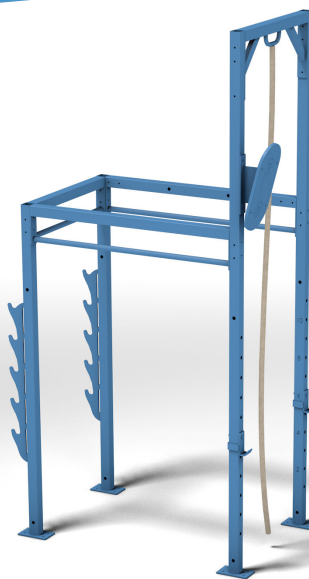
Dimensions LxWxH	132x222x 400 cm
Age group	13+ Years
Play capacity (users)	8
Colours	

Installation Information

Max. fall height	300 cm
Safety surfacing area LxW	450,9x681 cm
Total installation time	6 Hours
Shipment weight	303 kg
Anchoring options	Surface

Warranty Information

Hot dip galvanized steel	Lifetime
HDPE plate	Lifetime
Spare parts guaranteed	10 Years



Small Group Training


The Square Fit Small is our smallest outdoor rig, custom-made to suit small group training or individual home use. This compact rig offers versatile features, with stations supporting a multitude of training options, including wall balls, pull-ups, climbing, and weightlifting.

The Square Fit Small is equipped with the following: Climbing Rope, Fixed Barbell position, Flexible Barbell position with J-hook, Landmine, Wall Ball Target, Pull Up Bars.

Square Fit Medium

Item no. SQF20200-0901

Product Details

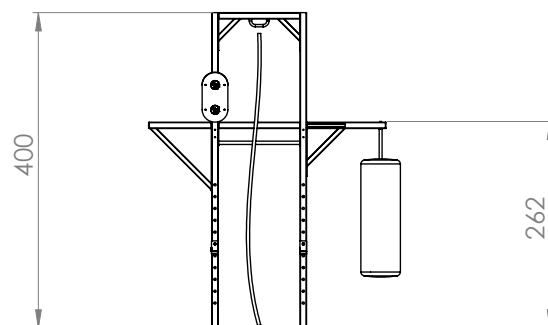
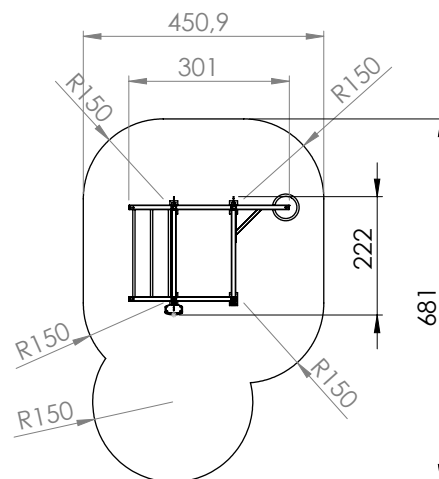
Dimensions LxWxH	301x222x 400 cm
Age group	13+ Years
Play capacity (users)	12
Colours	

Installation Information

Max. fall height	300 cm
Safety surfacing area LxW	450,9x681 cm
Total installation time	8 Hours
Shipment weight	345 kg
Anchoring options	Surface

Warranty Information

Hot dip galvanized steel	Lifetime
HDPE plate	Lifetime
Spare parts guaranteed	10 Years



Medium to Large Group Training


The Square Fit Medium is the most popular outdoor rig, custom-made to accommodate medium to large group training. It offers versatile features, with stations supporting a multitude of training options, including wall balls, pull-ups, climbing, boxing, and weightlifting.

The Square Fit Medium is equipped with the following: Climbing Rope, Boxing Bag, Fixed Barbell position, Flexible Barbell position with J-hooks, Landmine, Wall Ball Target, Pull Up Bars (3), Flying Pull Up Bar.

Square Fit Large

Item no. SQF20100-0901

Product Details

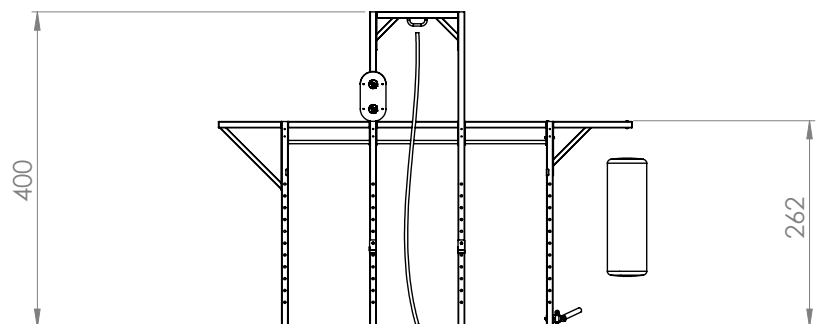
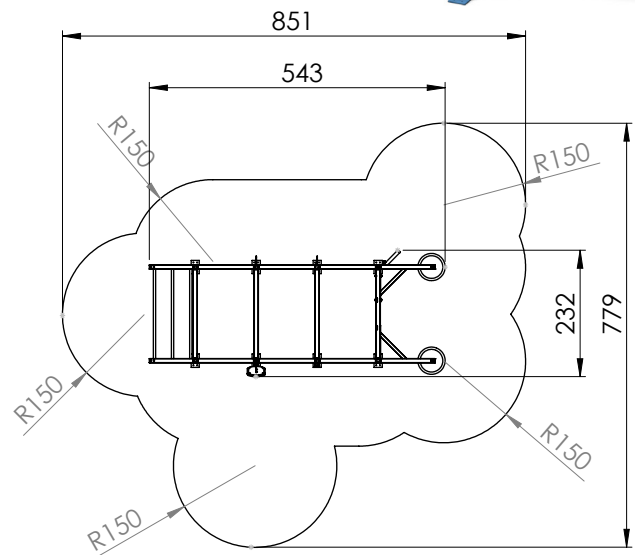
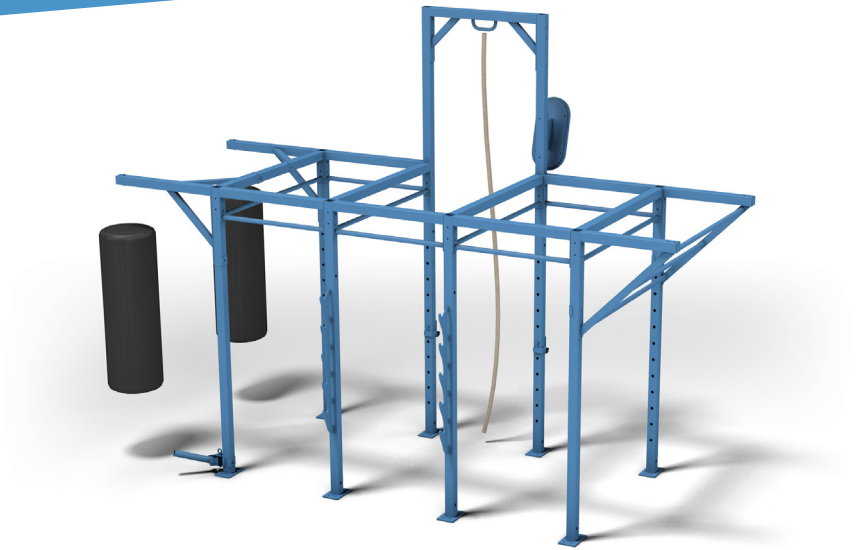
Dimensions LxWxH	543x232x 400 cm
Age group	13+ Years
Play capacity (users)	16
Colours	

Installation Information

Max. fall height	300 cm
Safety surfacing area LxW	851x779 cm
Total installation time	10 Hours
Shipment weight	535 kg
Anchoring options	Surface

Warranty Information

Hot dip galvanized steel	Lifetime
HDPE plate	Lifetime
Spare parts guaranteed	10 Years



Extra Large Group Training

The Square Fit Large is the largest custom rig in our lineup, and this setup is most popular among military personnel and schools. It offers versatile features, with stations supporting a multitude of training options, including wall balls, pull-ups, climbing, boxing, and weightlifting.

The Square Fit Large is equipped with the following: Climbing Rope, Boxing Bag (2), Fixed Barbell positions (2), Flexible Barbell positions with J-hooks (2), Landmine, Wall Ball Target, Pull Up Bars (8), Flying Pull Up Bar.

NOROCKETSCIENCE

Square Fit

